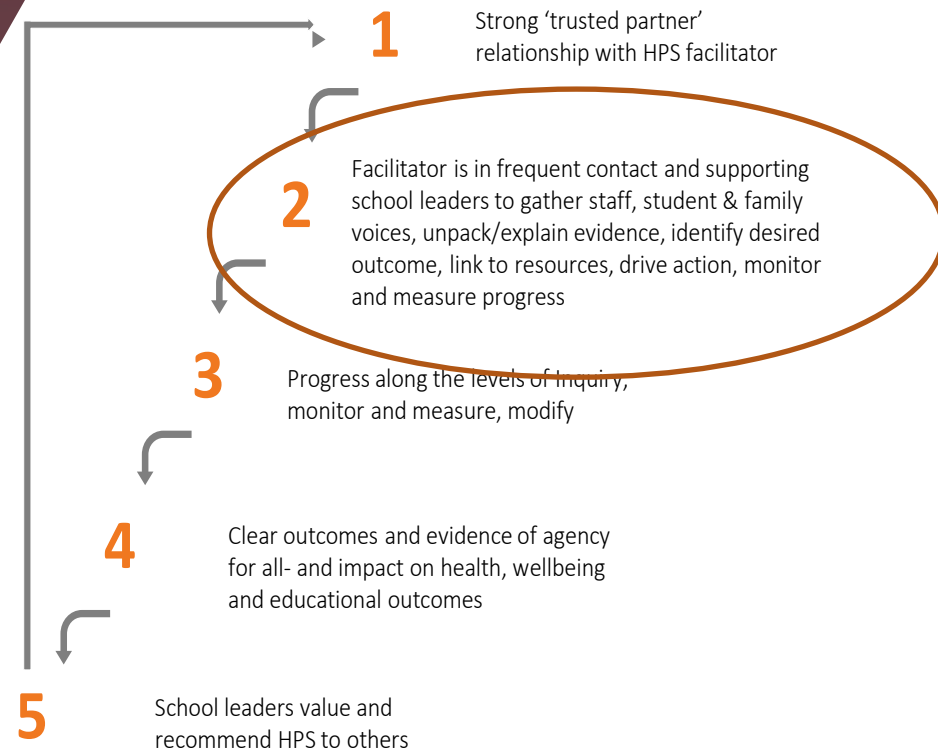


Follow up with school

What does best practice look like? Facilitator JD

Our research with schools confirms that a community development critical inquiry approach, as we have designed for HPS, delivers substantial benefits and outcomes to the broader school community



Principal has completed the rubric -see needs analysis questions below on taxonomy-whose voice is missing?

How to identify HPS Health and Wellbeing Rubric Focus....., Indicator?

1. Share rubric with staff and Board

Rubric to be shared with staff and board. Ratings compared and discussed so consensus can be reached on the main focus area.

2. An important question is “what evidence do we have that tells us where we are at in each of the domain?”

Under each domain in the HPS health and wellbeing rubric, HPS facilitators enable schools to critically reflect and identify the evidence that demonstrates which level or stage their practice is currently operating within.

3. What should be our focus area if we want to improve outcomes for those who are currently not achieving at the national standard?

Additional questions:

- Who in your school is not achieving at the expected/national standard?
- Why do you think they are not achieving?
- When you have asked these students and their parents why they are not achieving what have they identified as barriers and enablers?
- What have you tried that has worked in the past? What events do these students and parents come to?
- How could you re-purpose so includes opportunities?
- Are you ready to try something different?

4. Whose voices do we need?

- Specific data needed to find out what students, staff and parents think/believe . This will help with identifying the focus area
- HPS facilitator shared NZCER Wellbeing survey. Principal to do with the staff and students.
- What about parents? HPS facilitator to suggest the school identify relevant questions in the Inclusive Practices Survey and ask parents. Recommend to school that NZCER do analysis. Also the students not achieving-how can we can the school capture their voices and opinions?
- HPS facilitator to support school to bring community together to make sense of the data from the rubric and surveys From this data and other evidence in school the baseline data(need) identified.

Community Development Taxonomy Scenario Questions

Community Initiated Actions

What else is happening in the community that might have an impact on this issue?
Who could support you with this?
What other collaborative activities could you look to develop/
How do you currently engage whanau?
What evidence do you have to show this is improving outcomes?
How do you know that more parents are engaged?
Is this increasing equity within the school?
Is this a shared goal? With whom?
Who are all of the stakeholders who should be involved?

Collaborative Design

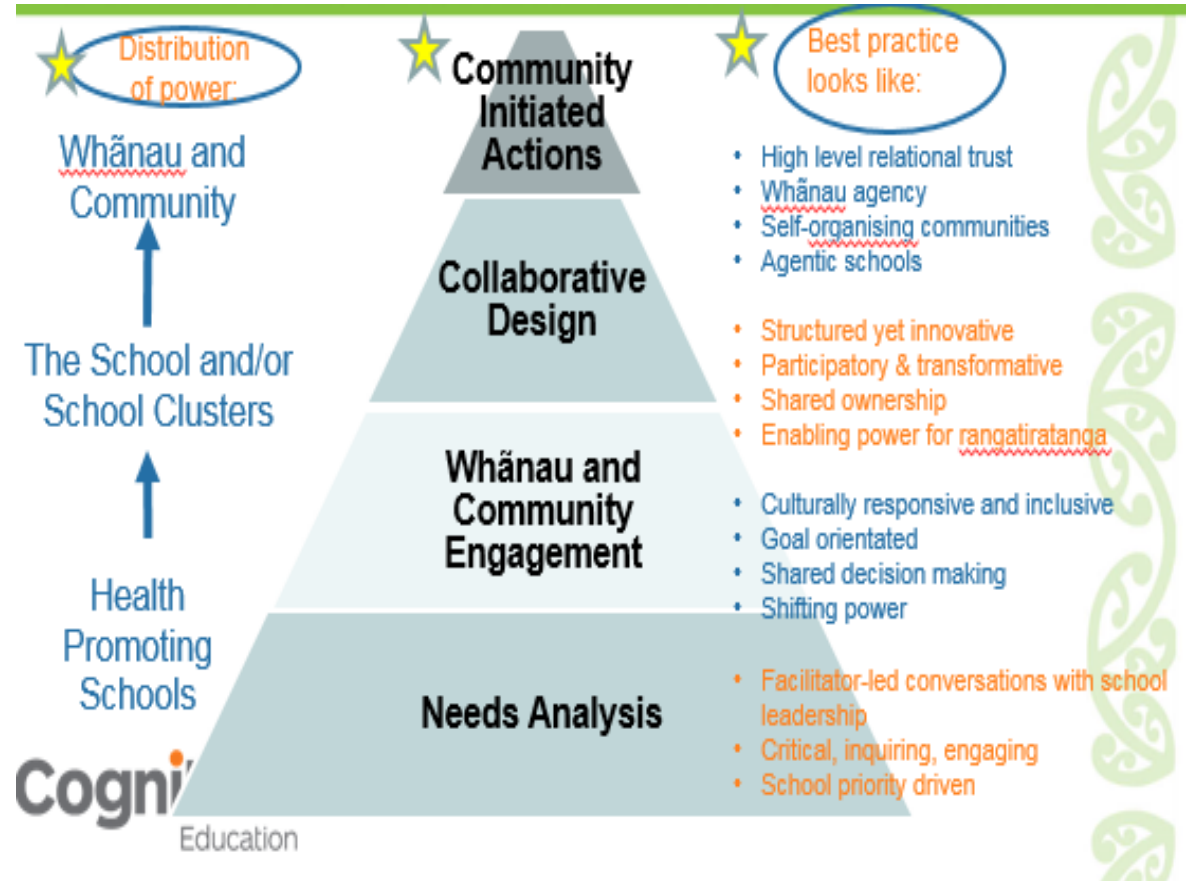
What other people and services could help you?
Have you spoken to anyone or any other agencies about this issue?
What strategies are required to reach your goal?
What can we do to increase parent engagement?
What are the current barriers?
What is working well at the moment?
What does the school community want to achieve?
Who has helped design this intervention?
What are the cultural needs (factors) that we need to consider?

Community Engagement

What do you want to achieve by undertaking this solution?
What are your expectations, do they match everyone else?
What/who are your stakeholders/which ones do you know of?
Is this what parents want? How do you know?
What support is the BOT able to provide?
How can you collect whanau voice?
How do you engage with whanau?
What kinds of questions can you ask your whanau?
What does your community want this to look like?
What whanau consultation has occurred?
What strengths do you have in your community that could support you?
What resources do you currently have in place?

Needs Analysis

How do you know that this is what is needed?
What is your evidence?
What are you currently doing to help resolve this issue?
Tell me about how you know....?
What are the exact issues? How do you know this?
What impact does this issue have on this group of students?
Is this a whole school issue or is it restricted to one or two groups?
Why do you need this? (Number, evidence etc.)
What are the specific barriers?
What do you want to achieve? How was this need identified? What current support is the school offering in this area? What have you done in the past?

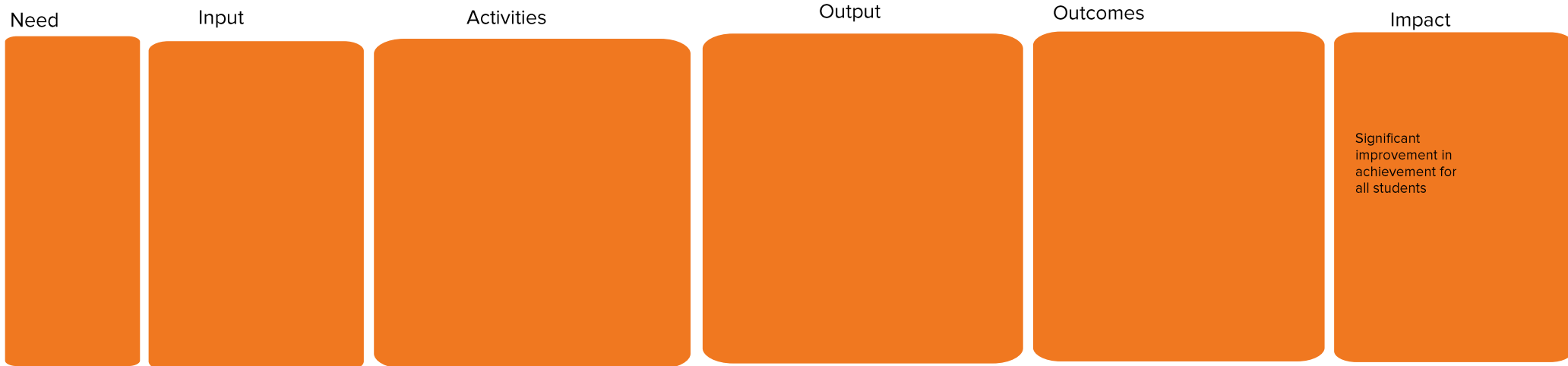


4 Nov 2016 | Draft Edition

Health Promoting Schools School Planning for Outcomes

30/5/17

Our Scenario



© Cognition Education 2016

Cognition
Education

Before/current baseline	Baseline data numbers and %
Desired Result (How we will measure success)	Data numbers and %
Action:	What actions will you need to take to shift from the baseline numbers and % to the desired result numbers and %?
Actual Result:	What actually happened i.e. the actual data baseline and %